

**Sunday Mass  
Attendance  
Census  
2005**

**Preliminary Report**

August 2006



**Sunday Mass  
Attendance  
Census  
2005**

**Preliminary Report**

August 2006



# Contents

<b>Foreword</b>	<b>3</b>
<b>Introduction</b>	<b>5</b>
<b>Methodology</b>	<b>9</b>
<b>Results</b>	<b>11</b>
1. General Results	
2. Archdiocese of Malta	
2.1 Day, Time and Place	
2.2 Sex	
2.3 Age	
2.4 Civil Status	
2.5 Place of Birth	
2.6 Parish of Residence	
2.7 Occupation	
2.8 Prior Attendance	
2.9 Membership of Catholic Organisation	
3. Diocese of Gozo	
3.1 Day, Time and Place	
3.2 Sex	
3.3 Age	
3.4 Civil Status	
3.5 Place of Birth	
3.6 Parish of Residence	
3.7 Occupation	
3.8 Prior Attendance	
3.9 Membership of Catholic Organisation	
<b>Significant Findings</b>	<b>66</b>



## FOREWORD

The Sunday Mass Attendance Census has become a regular feature in the life of the Archdiocese. It is an important source of data about the characteristics and composition of those attending Sunday Mass in Malta and Gozo. Its objective is to indicate to Pastoral Operators the importance being given by the People of God to this Sacrament and Sacrifice – the peak of Christian life. Besides this, when a census is taken at regular intervals – this being the fourth and third censuses held in the dioceses of Malta and Gozo respectively – it becomes an indicator of a trend.

This time, the Census was called for by the Synod of the Archdiocese of Malta. Literally hundreds of people were involved in this exercise, most of whom on a voluntary basis. DISCERN owes them more than a word of thanks. However, special thanks go to the Coordinating Team in particular to Rev Alex Bezzina for his splendid logistics coordination, and to the small staff of DISCERN. The success of the operation was also made possible through help from the Pastoral Secretariat, various relevant Curia Offices, the Parish Priests, Mr Reno Camilleri BSc of the MSA and Mr Alfred Camilleri BA, MSc of the NSO.

Rev Joe Inguanez  
Executive Director,  
DISCERN





## INTRODUCTION

### 1. Organisation

Among its conclusions, the Synod of the Archdiocese of Malta established that a Sunday Mass Attendance Census should be held at the earliest possible time. This would be the fourth such census held by the Archdiocese of Malta since 1967. Given that, in terms of the Census Act of 1948, a National Census of Population and Housing was due to be held in 2005, this was the most appropriate year to hold the Sunday Mass Attendance Census as it would make it possible to compare the number of Mass attendees with the population of Malta.

As a result of this, the Pastoral Secretary of the Archdiocese, the Rev. Charles Cordina, commissioned DISCERN – Institute for Research on the Signs of the Times – to undertake this exercise. After being contacted by H.G. the Archbishop, H.L. the Bishop of Gozo agreed to the idea that this Census was to be held simultaneously in both Dioceses.

After consultations with Mr Reno Camilleri, Chairman of the Malta Statistics Authority, and Mr Alfred Camilleri, Director General of the National Statistics Office (NSO) and Census Officer for the National Census, it was decided to hold the Sunday Mass Attendance Census on November 19 and 20, 2005. This decision was made after a Government Census Order provided for the taking of the Census on the 27 November 2005.

An organisational structure was set up at DISCERN to co-ordinate all activities including methodology, logistics, computer technology and analysis. Rev. Dr Joe Inguanez, Executive Director of DISCERN was to be responsible for the whole operation of the Sunday Mass Attendance Census. In this he was ably joined by Rev. Alex Bezzina, as Logistics Coordinator, Dr Charles Savona-Ventura, and later, by Mr Mark Rizzo BSc (Bath) as Research Consultants.

### 2. The Questionnaire Schedule and Logistics

For comparative purposes, it was decided to stick, apart from a few changes which were deemed useful, to the same questionnaire schedule which was used by DISCERN in the 1995 Sunday Mass Attendance Census. However, the new draft copy was discussed with both Mr Reno Camilleri (MSA) and Mr Alfred Camilleri (NSO). Their suggestions were fully taken into consideration

in the final version of the questionnaire schedule. The design of the Census schedule was prepared by Outlook Coop and the printing was carried out at the Media Centre.

In addition to the Census questionnaire schedule, the roles of the Census Coordinators, Supervisors and Enumerators were established and printed. The Parish Priests were asked to provide DISCERN with a number of parishioners who would ably play these roles. The Parish Priests took this commitment seriously and they are to be commended for their cooperation. The various phases of the actual taking of the Census were planned in detail. A list of places (consecrated or otherwise) where Masses were expected to be held on Census day was duly drawn up.

The filling of the Census schedule was to substitute the homily and the celebrant was to read detailed instructions to be followed by the attendees in the filling of the Census schedule. Besides this a Power Point presentation which included the Census schedule and each question individually displayed was given to those parishes who requested it. Positive comments were received as to the usefulness of this method.

### **3. Recruitment**

From the list of persons submitted to us by all the Parish Priests of Malta a list of 69 Parish Coordinators were selected. The first training session of these Coordinators was held on 2 May 2004 at the conference hall of the Curia, Floriana. During this meeting the Coordinators were fully briefed on the Census and its organisation. Besides this the Coordinators were asked to appoint a Supervisor for each Church or place of worship within their Parish territory. Besides these they were also asked to build a team of Enumerators from their Parish. The role of the Coordinators essentially included the responsibility of all the Census operation at the Parish level. The role of the Supervisors under the direction of the Coordinators was to cater for the logistics on Census day of the Census, in the particular Church/Place of Worship to which they were assigned by the Supervisor. Under the direction of the Supervisors, the Enumerators' role was to distribute the questionnaire sheets and ballpoint pens to those attending Mass. They were also required to help those attendees who for one reason or another could not fill in the form themselves.

For practical purposes in the Diocese of Gozo the role of Supervisors was taken by Parish Priests or their assistants. Rev Inguanez and Rev Bezzina briefed all the Parish Priests of the Diocese of Gozo in the presence of H.L. Bishop Nicol Cauchi.

In order to avoid the possibility of a particular Mass being ignored a circular was sent individually to all Diocesan and Religious clergy on the 15 September 2005 to inform DISCERN of any special Masses (e.g. Masses for retreats, seminars, weddings etc.) which they would be celebrating on Census day.

This Preliminary Report contains many results in the form of tables and graphs. These are grouped into three main sections; General Results, Archdiocese of Malta and Diocese of Gozo. The results are summarised in the final chapter under Significant Findings.

Finally attention should be drawn to the fact that this is a Preliminary Report of the Sunday Mass Attendance Census. A full report giving full details as to the composition and characteristics of the attendees in each Parish will be included in a full report to be published later.



# Methodology

## Weighted Population of the Maltese Islands

According to the Preliminary Report of the Census of Population and Housing 2005 (NSO, 2006) the population of Malta and Gozo stood at 404,039 persons.

However, according to Church law, several categories of people are exempt from the obligation of attending Sunday Mass. These include children under the age of 7 and those who have a serious impediment such as sick persons.

Unofficial figures from the Census of Population and Housing 2005 (NSO, 2006) show that the population of those who were under-7 in November 2005 amounted to 26,421, that is, 6.539% of the total population. Besides this, in the beginning of 2006, Discern ran a survey among 838 – randomly selected – households in Malta to see how many people were unable to leave their home due to illness or old age on the day the survey was being administered. 93 households indicated that there was a resident who could not leave home on that day. Given a total of 134,000 households in Malta and Gozo (NSO, 2006), one can extrapolate that 14,871 people were housebound on that particular randomly selected day. It is estimated that on the weekend 19/20 November 2005, when the Mass Attendance Census 2005 was held, there was a population of 2590 patients in State Hospitals. If one adds this figure to that obtained by the Discern survey, the total figure of those who could not attend Mass due to illness, old age or related causes, amounted to 17,461; this figure amounts to 4.322% of the Maltese population.

Hence, if one adds the percentage of the under-7 year olds to that of the infirm and housebound, one can estimate that 10.861% were exempt from their duty to attend Sunday Mass.

Therefore a studied weighted estimate of the total Maltese population would amount to 360,157, distributed in the following manner: Malta has a weighted population of 332,476, and Gozo and Comino 27,680.

## **First or More Masses**

Mass attendees were asked to complete a Census questionnaire at every Mass of the Census weekend, regardless of whether they had already been to Saturday evening or Sunday Mass and had already filled in a questionnaire. Therefore those who attended more than one Mass would have filled in more than one form and this number has been carefully noted.

In order to give an accurate picture of Mass attendance *we have worked using the 'First Mass' figures throughout the report.* In this way we measure the true proportion of the population who attend Mass and we are avoiding the mistake of counting multiple attendees more than once.

## **Malta and Gozo Data**

The Census questionnaires were filled in and collected together by parish and the parishes were split into two groups; Malta, and Gozo. This report however does not group attendees according to the islands where they attended Mass. Instead we are interested in the island of residence of the attendees and this is for the reason that it enables us to calculate the proportion of island residents who attend Mass.

*Thus the tables and graphs concern the residents of given islands, regardless of which island the resident attended Mass.* For example, many Gozitan residents attended Mass in Malta on the Census weekend, but they will not appear in the Malta data; they are part of the Gozo data seeing as they are Gozitan residents.

# Results

## 1. General Results





# 1. General Results

Table 1a shows the Mass attendance of Maltese, Gozitans and foreigners on the Census Sunday. However, the table does not include all the attendees at Mass on the day and this is shown by the 'missing value' of 5003. 5003 more Census questionnaires were filled in but are not recorded in Table 1a and this is due to these forms containing no information on either first/more Masses or present residence.

Table 1c gives the true total Mass attendance as it includes the missing values and thus all the attendees are counted in this table. In order to produce Table 1c, the percentages from Table 1b were used to distribute the 5003 missing values accurately. For example, 82.7% of all attendees were Maltese and attending a first Mass. Therefore 82.7% of the 5003 missing values were assumed to fall into this category and they were added to 165,343 to give a true final figure of 169,480.

**Table 1a Mass Attendance**

	Present Residence			Total
	Malta	Gozo	Abroad	
First Mass	165343	19627	544	<b>185514</b>
More Masses	11390	2940	34	<b>14364</b>
<b>Total</b>	<b>176733</b>	<b>22567</b>	<b>578</b>	<b>199878</b>

Missing values N=5003

**Table 1b Total Mass Attendance (with percentages)**

		Present Residence			Total	
		Malta	Gozo	Abroad		
	First Mass	Count	165343	19627	544	185514
		% of Total	82.7%	9.8%	.3%	92.8%
	More Masses	Count	11390	2940	34	14364
		% of Total	5.7%	1.5%	.0%	7.2%
<b>Total</b>		Count	176733	22567	578	199878
		% of Total	88.4%	11.3%	.3%	100.0%

Missing values N=5003

**Table 1c Total Mass Attendance (Including Missing Values)**

	Malta	Gozo	Abroad	Total
First Mass	169480	20117	559	190157
More Masses	11675	3015	34	14724
<b>Total</b>	<b>181156</b>	<b>23132</b>	<b>593</b>	<b>204881</b>

Including Missing Values

It is being studiedly assumed that the weighted population of Malta stood at 332,476 (out of 372,986) and that of Gozo 27,680 (out of 31,053).

The overall number of attendees in the Maltese islands amounted to 190,157 however 559 of these were overseas residents and thus the attendance of Maltese and Gozitan residents was 189,598.

The number of Maltese residents who have attended Mass (in either Malta or Gozo) on Census Sunday amounted to 169,480 (first mass), which amounts to 51.0% of those duty bound to attend Mass.

On the other hand, the number of Gozitan residents who have attended Mass (in either Malta or Gozo) on Census Sunday amounted to 20,117 (first mass), which amounts to 72.7% of those duty bound to attend Mass.

Together, 52.6% of Maltese and Gozitans attended Mass.

**Table 1d Percentage of Residents Attending Mass**

Attendance of Maltese	51.0%
Attendance of Gozitans	72.7%
Attendance of Maltese and Gozitans	52.6%

Table 1e shows the absolute and percent attendance in the Maltese islands in the four Mass Censuses held since 1967. The absolute attendance has fallen in the past ten years and the percent attendance has fallen significantly.

**Table 1e Percent Attendance in Previous Years**

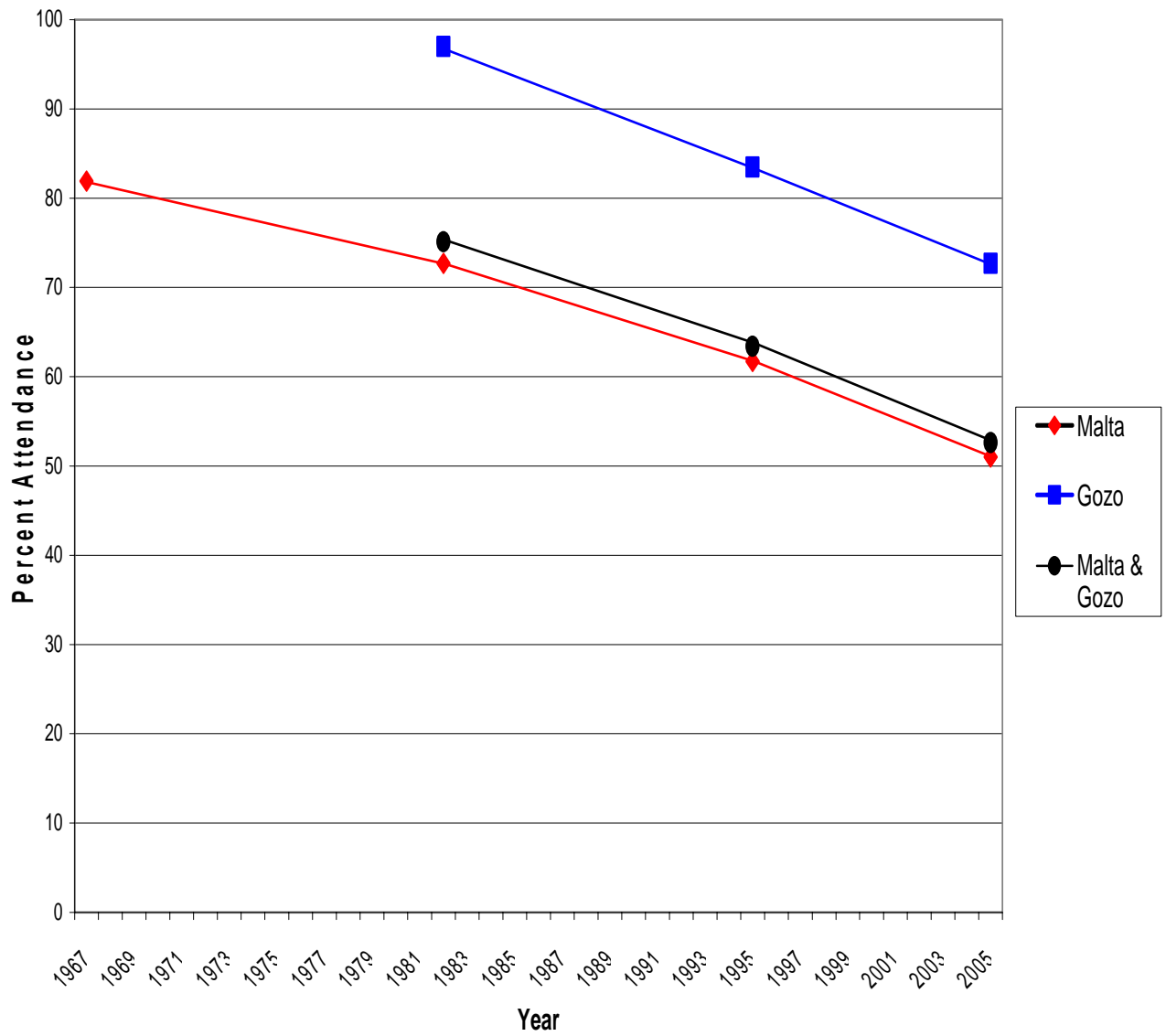
<b>Year</b>	<b>Malta</b>	<b>Percent</b>	<b>Gozo</b>	<b>Percent</b>	<b>Malta &amp; Gozo</b>	<b>Percent</b>
<b>1967</b>	198,150	81.9	NA	NA	NA	NA
<b>1982</b>	182,951	72.7	20,361	97.0	203,312	75.1
<b>1995</b>	183,220	61.7	20,558	83.5	203,808	63.4
<b>2005</b>	169,480	51.0	20,117	72.7	189,598	52.6

Table 1f further illustrates the changes in attendance and the Maltese attendance has fallen by 10.7% between 1995 and 2005, at a rate of 1.07% per annum, which is faster than in previous decades. Gozo and the Maltese islands as a whole have fallen by 10.8%, at a rate of 1.08% per annum, which is also a greater rate than before.

**Table 1f Change in Attendance over the Years**

<b>Year</b>	<b>Malta</b>	<b>Rate change per annum</b>	<b>Gozo</b>	<b>Rate change per annum</b>	<b>Malta &amp; Gozo</b>	<b>Rate change per annum</b>
<b>1967 – 1982</b>	-9.2%	-0.61%	NA		NA	
<b>1982 – 1995</b>	-11%	-0.85%	13.5%	-1.04%	-11.7%	-0.9%
<b>1995 – 2005</b>	-10.7%	-1.07%	10.8%	-1.08%	-10.8%	-1.08%

Graph 1 Percent Attendance in the Maltese Islands since 1967



## **2. Archdiocese of Malta**



## 2. Archdiocese of Malta

### 2.1 Day, Time and Place

Table 2.1a shows that almost one third of Mass attendees (28.8%) went to the Saturday evening Mass, the remaining 71.2% went on Sunday. Among the attendees, 11239 (6.5%) participated in two or more Masses on the census weekend. Of those who went to Mass on Saturday 2.2% went for a second Mass; whilst 8.2% of those who attended Mass on Sunday had already attended a Mass of Obligation (which includes the possibility of going to Mass on both Saturday evening and another one on Sunday).

Table 2.1a Day and Number of Attendances

		Saturday Eve/Sunday		Total
		Saturday	Sunday	
<b>First Mass</b>	Count	49053	113939	<b>162992</b>
	% within First or More Masses	30.1%	69.9%	<b>100.0%</b>
	% within Saturday Eve/Sunday	97.8%	91.8%	<b>93.5%</b>
<b>More Masses</b>	Count	1118	10121	<b>11239</b>
	% within First or More Masses	9.9%	90.1%	<b>100.0%</b>
	% within Saturday Eve/Sunday	2.2%	8.2%	<b>6.5%</b>
<b>Total</b>	Count	50171	124060	<b>174231</b>
	% within First or More Masses	28.8%	71.2%	<b>100.0%</b>
	% within Saturday Eve/Sunday	100.0%	100.0%	<b>100.0%</b>

Missing values N=6925

Table 2.1b lists the ten most popular Mass times for Maltese attendees. Saturday evening Masses are very popular with the first, third and tenth most popular times. On Sunday the 11am, 8am and 7am are the most popular times. One must note that for practical purposes Masses said at the quarter of an hour e.g. 7.15 were always rounded up to the half hour e.g. 7.30.

**Table 2.1b Ten Most Popular Time Schedules**

	Time	Attendance
1	<i>18.30</i> <i>Saturday</i>	<i>17634</i>
2	11.00 Sunday	11605
3	<i>18.00</i> <i>Saturday</i>	<i>11239</i>
4	8.00 Sunday	10682
5	7.00 Sunday	9804
6	8.30 Sunday	9527
7	9.30 Sunday	8523
8	18.00 Sunday	7834
9	9.00 Sunday	7642
10	<i>17.30</i> <i>Saturday</i>	<i>7047</i>

Table 2.1c records the first Mass attendance at every place of worship in Malta on the Census day.

**Table 2.1c Attendance at Places of Worship in Malta**

Attard	1797
Attard-Mt Carmel Hospital	111
Attard-Parish Centre	883
Attard-S.Katerina	703
Attard-San Anton	40
Balluta	497
Balluta - Casa Leone	203
Balluta - O.Carm Convent	40
Balluta - Parish Centre GH	929
Balluta - Pastoral Centre	131
Balluta - S.Ignatius	707
Balluta - Zammit Clapp Hospital	77



Balzan	1808
Balzan – Casa Antonia	68
Balzan – Franciscan M M	44
Balzan – Villa Annunziata (Srs Charity)	36
Balzan – N-C Parish Centre	36
Balzan – Bon Pastor Convent	44
B'Bugia	2605
B'Bugia – Good Shepherd	124
B'Bugia – Imm.Concep. Ch (Benghisa)	73
B'Bugia – S. George's Ch	206
B'Kara – Assumption	832
B'Kara – S.Helen	2699
B'Kara – S.Joseph	710
B'Kara SGH – N-C Parish Hall	434
B'Kara SGH – St,Thersa's Sanctuary	5566
B'Kara SH – Frate Franceso (Nazju Falzon)	115
B'Kara SH – Mary Mother of the Church (Swatar)	651
B'Kara SH – O.L. of Victory Ch	87
B'Kara SH – Private Residence	25
B'Kara SH – S.Dominic Savio Oratory	313
B'Kara SH – S.Francis of Assisi Ch	1098
B'Kara SH – S.Rocco Ch	202
B'Kara SH – SDC MUSEUM	58
B'Kara SH – St.Paul's Ch	125
B'Kara SH – Tal-Herba	66
B'Kara SM – Christus Sacerdos	57
B'Kara SM – St.Aloysius College Ch	256
Bormla	1600
Bormla – Franciscans Sisters	11
Bormla – S.Margaret's Ch	53
Bormla – St.Joseph's Conservatory	71
Bormla – St.Paul's Church	161
Bormla – St.Theresa Ch	657
Bormla – St.Thomas Ch	34
Burmarrad	434
Burmarrad – Annunciation Ch	23
Burmarrad – NC Coastline Hotel	314
Burmarrad – S.Margaret's Ch (Ghajn Rihana)	65
Dingli	1321
Dingli – Savio College Ch	78
Fgura	3508
Fgura – Parish Centre	61
Fgura – Parish Hall (Liedna Str)	49

Fgura –Robinich House	29
Fleur-de-Lys	1069
Fleur-de-Lys – Dar Hanin Samaritan	16
Floriana	743
Floriana – Boffa Hospital Ch	37
Floriana – Bus Terminus	56
Floriana – Flight to Egypt Ch (Waterfront)	55
Floriana – Holy Cross Church (OFM Cap)	510
Floriana – Home for the Elderly	20
Floriana – N-C	27
Floriana – Police HQ	27
Floriana – Sarria Church	188
Gharghur	822
Gharghur – St.Mary of the Angels Ch	316
Ghaxaq	1432
Ghaxaq – N-C Blessed Don Vincente Centre	30
Ghaxaq – Santu Kristu Ch	12
G'Mangia	700
G'Mangia – Convent Hall	61
G'Mangia – Our Lady of Sorrows Ch	165
G'Mangia – Sa Maison Rest House	79
Gudja	1259
Gudja – MIA Chapel	217
Gzira	1680
Gzira – De La Salle Brothers	334
Gzira – Gesu' Redentur Ch	152
Gzira – Home for the Elderly	24
Gzira – St.Monica Convent	14
Hamrun – Imm.Conception	1245
Hamrun – S.Cajetan	1576
Hamrun IC – Egyptian Sisters	49
Hamrun IC – N-C	49
Hamrun IC – N-C Villambrosa	115
Hamrun IC – S.Francis of Assisi Ch	1252
Hamrun SG – Fra Diego	41
Hamrun SG – Gattard House	116
Hamrun SG – L.S. of the Poor Home	85
Hamrun SG – Marija Regina Sec.School	57
Hamrun SG – N-C ZAK	17
Hamrun SG – OL Miraculous Medal Ch	163
Hamrun SG – Our Lady of Sorrows Ch	353
Hamrun SG – Tas-Samra	422
Ibrag	2061

Iklin	938
Kalkara	583
Kalkara – S.Liberata (OFM Cap)	976
Kalkara – Wied Ghammieq Cemetry	53
Kirkop	736
Lija	1350
Lija – Dar San Pietru	50
Lija – Tal-Mirakli	310
Luqa	1357
Luqa – AFM Ch	31
Luqa – Hal-Farrug	102
Luqa – Parish Centre	42
Luqa – SDC MUSEUM Boys	77
Luqa – SVDP+RBH	308
Manikata	263
Marsa – Maria Regina	1281
Marsa – S.S.Trinta'	1466
Marsa MR – Marija Addolorata Ch	54
Marsa MR – Sala San Piju	32
Marsa SST- Fergħa Ewkaristika	87
Marsa SST- Marsa Sports Club	141
Marsa SST- OL of Graces Ch (Ta Cejlu)	136
Mdina	392
Mdina – St.Peter's Monastery	21
Mdina – Knisja tal-Vittorja	33
Mdina – OL Mt Carmel Ch	101
Mdina – San Pawl tal-Qlejja	37
Mellieha	2350
Mellieha – Madonna tal-Fidwa Ch (Selmun)	537
Mellieha – Mellieha Bay Hotel	15
Mellieha – OL of Mellieha Sanctuary	218
Mellieha – Paradise Bay Hotel	24
Mellieha – Ramlet Qortin	63
Mellieha – Riviera Hotel	29
Mellieha – St.Mary's House (FSC)	38
Mgarr	1335
Mgarr – Bingemma	26
Mgarr – St.Anne (Zebbiegh)	178
Mosta	4911
Mosta – Casa Arkati	85
Mosta – Catechumenium	173
Mosta – Central Home for the Elderly	69
Mosta – Govt Home for the Elderly	98

Mosta – Holy Family (Bidnija)	119
Mosta – Jesus Saviour Ch (Santa Margerita)	195
Mosta – Mary Mother of the Church (Mlit)	308
Mosta – Mt St.Joseph Retreat House	66
Mosta – Pax & Bonum Home	167
Mosta – S.H. of Jesus Oratory	143
Mosta – San Anton Ch	69
Mosta – Sant'Andrija	174
Mosta – Speranza Ch	85
Mosta – St Sylvester Ch	58
Mosta – St.Monica's Convent	279
Mosta – Visitation Ch	30
Mqabba	1003
Mqabba – N-C	24
Msida	1518
Msida – Dar Betanja	42
Msida – Franciscan Sisters Convent	209
Msida – Govt Home for the Elderly	66
Msida – Loreto Church (Ursolines)	291
Msida – Marina Home for the Elderly	56
Msida – OL Imm Conception Ch	90
Msida – St.Luke Hospital	373
Msida – St.Thomas More University Ch	223
Mtarfa	401
Mtarfa – Dar ta' l-Anzjani	109
Mtarfa – Kappella San Oswaldu	149
M'Xlokk	1579
M'Xlokk – M'Xlokk School	88
M'Xlokk – N-C Parish Hall	15
M'Xlokk – OL of Snow (OCD)	175
Naxxar	2895
Naxxar – Holy Family House	40
Naxxar – Kuncizzjoni	36
Naxxar – Madonna tat-Triq (SJ)	124
Naxxar – San Gwann	58
Naxxar – San Pawl tat-Targa	314
Naxxar – Santa Lucija	51
Naxxar – Santa Marija tal-Maghtab	47
Naxxar – Santa Marija tax-Xaghra	95
Naxxar – Sghajtar	1206
Naxxar – Trade Fair Hall	28
Paola – CCF Chapel	16
Paola – CCF Corradino – Female Section	9

Paola – Christ King	2897
Paola – O.L.Lourdes	622
Paola K R – CCF Juvenile	6
Paola K R – Corradino Rehabilitation Centre	46
Paola K R – Santa Ubaldeska	57
Paola K R Cimiterju ta' l-Addolorata	43
Paola KR – Knisja ta' Sant' Antnin (Kappuccini)	981
Paola KR – St Joseph Sisters Chapel	70
Pembroke	1226
Qawra	1790
Qawra – Centru Parrokkjali (N-C)	33
Qawra – Kappella San Guzepp	66
Qawra – Knisja Massimiljanu Marija Kolbe	319
Qawra – Qawra Palace Hotel	103
Qormi – S.George	2678
Qormi – S.Sebastian	3746
Qormi San Bastjan – Centru Parrokkjali (Neo-Kat)	21
Qormi San Bastjan – Kappella tad-Duluri	163
Qormi San Bastjan – Kappella tar-Ruzarju – Sorijiet Agostinjani	71
Qormi San Bastjan – Kappella tas-Sokkors	63
Qormi San Gorg – Kappella Sagra Familja	654
Qormi San Gorg – Knisja Madonna tal-Hlas	51
Qormi San Gorg – Knisja tal-Vitorja	116
Qormi San Gorg – Sorijiet Frangiskani	28
Qrendi	742
Rabat	2283
Rabat – Bahrija San Martin	381
Rabat – Dar ta' l-Anzjani Medina Home Nigret	33
Rabat – Dar ta' l-Anzjani Villa Messina	101
Rabat – Depiro Youth Centre	99
Rabat – Kappella ta' Santa Katarina	22
Rabat – Knisja ta' San Anton Abbati Buskett	50
Rabat – Knisja ta' San Frangisk tal-Pjagi (OFM Conv.)	277
Rabat – Knisja ta' San Bastjan	48
Rabat – Knisja ta' San Mark (OSA)	588
Rabat – Knisja ta' Santa Marija ta' Gesu – Frangiskani Minuri	689
Rabat – Knisja tal-Lunzjata	91
Rabat – Knisja tal-Vitorja	68
Rabat – Kunvent Sorijiet tas-St Joseph	21
Rabat – Nigret Kappella ta' San Luqa	496
Rabat – San Duminku	1077
Rabat – Sant' Agata	203

Rabat – Seminary	107
Rabat – Sorjiet Orsolini	30
Rabat – Ta' Saura	60
Rabat – Wied Gerzuma – Kappella Kuncizzjoni	105
Rabat SATU	13
S.Pawl il-Bahar	1271
SPB – Centru ta' Talb	22
SPB – Cimiterju	70
SPB – Dar ta' l-Anzjani : Casa Serena	30
SPB – Knisja Madonna tal-Karmnu	103
SPB – Knisja San Pawl tal-Hgejjeg	582
SPB – Knisja ta' San Guzepp Haddiem	673
SPB, Pwales – Knisja Sant' Anna	35
SPB, Wardija – Knisja tal-Madonna ta' l-Abbandunati	49
Safi	666
Safi – Detention Centre	7
San Giljan	1722
San Giljan – Knisja ta' Lapsi	184
San Giljan – Knisja ta' Santa Klara	135
San Giljan – Knisja ta' Santa Rita Agosinjani	368
San Giljan – Westin Dragonara	14
San Giljan, Paceville – Knisja tal-Mad. tal-Parir it-Tajjeb	151
San Giljan, Paceville – Millennium Chapel	706
San Gwann	3041
San Gwann – Centru Parokkjali San Guzepp (Neo Kat)	156
San Gwann – Centru Pastoral taz-Zwejt	263
San Gwann – Kappella tal-Mensija	304
Santa Lucija	1845
Santa Venera	812
Santa Venera – Apap Institute	60
Santa Venera – Dar Guzeppi Depiro	57
Santa Venera – Dar San Guzepp (Hall)	45
Santa Venera – Knisja qadima	654
Santa Venera – Knisja ta' San Guzepp	185
Santa Venera – Sala Parokkjali (Neo Kat)	52
Senglea	1020
Senglea – St.Philip Church	183
Senglea – Casa Sant'Anna	21
Siggiewi	3035
Siggiewi – Centru Pastoral Trinita' Qaddisa	148
Siggiewi – Dar tal-Providenza	65
Siggiewi – Ta' Kandja SAG	7
Sliema Gesu Nazz	1599

Sliema S.C. – Dar ta' l-Anzjani Charella	39
Sliema S.C. – Kappella Sorijiet Frangiskani	47
Sliema Sacro Cuore	1137
Sliema San Girgor	1093
Sliema San Girgor – Knisja tas-Sagra Familja (Orsolini)	204
Sliema San Girgor – Oratorju Don Bosco	315
Sliema San Girgor – Saint Patrick's	1040
Sliema Stella Maris	1273
Ta' Xbiex	899
Tarxien	1260
Tarxien – All Souls Church	1055
Tarxien – Knisja ta' San Bert	26
Tarxien – St.Nicholas Church (OSA)	834
Valletta San Duminku	1191
Valletta San Pawl	635
Valletta Santu Wistin	804
Valletta SD – Knisa ta' San Frangisk	1026
Valletta SD – Knisja Madonna tal-Vitorja	98
Valletta SD – Knisja ta' San Gakbu	99
Valletta SD – Knisja ta' Santa Barbara	201
Valletta SD – Knisja ta' Santa Katarina	21
Valletta SD – Knisja tal-Madonna tal-Karmnu	347
Valletta SD – Knisja tas-Sagramentini	27
Valletta SD – Kon-Katidral ta' San Gwann	583
Valletta SP – Knisja ta' Liesse	205
Valletta SP – Knisja ta' Santa Lucija	37
Valletta SP – Knisja ta' Santa Marija ta' Gesu	208
Valletta SP – Knisja ta' Santu Rokku	33
Valletta SP – Knisja tal-Gizwiti	243
Valletta SP – Knisja ta' Sant' Ursola	6
Vittoriosa	1067
Vittoriosa – Annunciation Church (OP)	330
Vittoriosa – De La Salle College (FSC)	58
Vittoriosa – S.H. of Jesus (Hawli)	88
Wied-il-Ghajj	3035
Wied-il-Ghajj – Jerma Hotel	14
Wied-l-Ghajj – St.Cajetan	63
Zabbar	2955
Zabbar – Centru Marija Bambina	191
Zabbar – Knisja Santa Marija	83
Zabbar – Knisja ta' San Gakbu (Xghajra)	703
Zabbar – Knisja ta' San Guzepp	133
Zabbar – Knisja tas-Salib Mqaddes	687

Zebbug – Kappella ta' Hal Mula	277
Zebbug – Knisja ta' Santa Marija	52
Zebbug – Knisja tal-Madonna tad-Dawl	39
Zebbug – Knisja tal-Madonna tal-Grazzja	106
Zebbug – Malta	3602
Zebbug – San Guzepp	40
Zebbug – Santwarju Qalb ta' Gesu	569
Zebbug –San Blas	21
Zejtun	2685
Zejtun – Centru Nazju Falzon	21
Zejtun – Dar ta' l-Anzjani	102
Zejtun – Domus	205
Zejtun – Gebel San Martin	253
Zejtun – Kazin tal-Banda	112
Zejtun – Knisja San Girgor	821
Zejtun – Knisja ta' San Klement	45
Zejtun – Knisja ta' Santa Marija tal-Hlas	66
Zejtun – Knisja tal-Madonna tal-Hniena	262
Zejtun – Knisja tan-Nazzarenu	290
Zejtun – Sala Neo-Kat	20
Zurrieq	3104
Zurrieq – Knisja ta' Santa Marija Bubaqra	450
Zurrieq – Knisja tal-Kuncizzjoni fin-Nigret	321
Zurrieq – Lab. Paci	354

Table 2.1d highlights the ten most popular places of worship in Malta.

**Table 2.3d Ten Most Popular Places of Worship**

	Type of Church	Count
1	B'Kara SGH – St,Thersa's Sanctuary	5566
2	Mosta	4911
3	Qormi – S.Sebastian	3746
4	Zebbug – Malta	3602
5	Fgura	3508
6	Zurrieq	3104
7	San Gwann	3041
8	Wied il-Ghajn	3035
9	Siggiewi	3035
10	Zabbar	2955



## 2.2 Sex

Table 2.2a gives the absolute and percent distribution of Maltese attendees by sex. Males form 45.3% of the Maltese attendees and females form 54.7% of attendees.

**Table 2.2a Distribution of Attendees by Sex**

Sex	Male	N	73974
			45.3%
	Female	N	89194
			54.7%
Total		N	163168
			100.0%

Missing values N=7927

Table 2.2b presents the percent attendance of both sexes. 41.5% of men went to Mass whilst a higher percentage of women, 55.4%, went to Mass on Census day. These figures were calculated by firstly adding the missing values onto the attendees in Table 2.2a in order to give a true number of attendees. The total male (185366) and female (187620) populations of Malta (NSO, 2005) were used to find the weighted populations and thus the percentage attendance of both sexes was calculated.

**Table 2.2b Percentage Attendance of Male/Female Weighted Population**

	Percent attendance
Male	41.5
Female	55.4

Including Missing Values

Table 2.2c gives the distribution of attendees according to sex for all the parishes of Malta. There are two measures given in the table. The first two columns show the distribution by sex for the *parish of residence* of the

attendees. The last two columns show the distribution by sex for the *parish of congregation*

In Sliema Nazzarenu 61.42% of resident attendees are female whilst in Burmarrad only 50.8% of resident attendees are female.

The congregation with most females is Sliema Sacre Cuor with 61.8% whilst Birkirkara St Joseph has only 50.2% female congregation.

**Table 2.2c Attendees by Parish of Residence/Congregation and Sex**

District 1					
		% of Residents		% of Congregation	
		Male	Female	Male	Female
	<b>Malta Average</b>	<b>45.3</b>	<b>54.7</b>	<b>45.2</b>	<b>54.8</b>
Unit 1	Floriana	42.5	57.5	48	52
	Valletta - unspecified	43.64	56.36		
	Valletta San Duminku	45.04	54.96	47.4	52.6
	Valletta San Pawl	44.47	55.53	49.7	50.3
	Valletta Santu Wistin	42.01	57.99	45.1	54.9
Unit 2	G'Mangia	43.36	56.64	42.6	57.4
	Hamrun - unspecified	44.23	55.77		
	Hamrun - Imm.Conception	43.39	56.61	44.6	55.4
	Hamrun - S.Cajetan	41.59	58.41	42.3	57.7
	Marsa - unspecified	50.9	49.1		
	Marsa - Maria Regina	45.24	54.76	47.8	52.2
	Marsa - S.S.Trinta'	45.71	54.29	48.6	51.4
	Santa Venera	44.63	55.37	43.6	56.4
Unit 3	B'Kara - unspecified	52.66	47.34		
	B'Kara - S.Joseph	47.08	52.92	49.8	50.2
	B'Kara - S.Helen	45.48	54.52	45.2	54.8
	B'Kara - Assumption	46.99	53.01	47.4	52.6
	Fleur-de-Lys	43.66	56.34	42.3	57.7

District 2					
		% of Residents		% of Congregation	
		Male	Female	Male	Female
	<b>Malta Average</b>	<b>45.3</b>	<b>54.7</b>	<b>45.2</b>	<b>54.8</b>
Unit 4	Attard	46.93	53.07	45.8	54.2
	Balzan	43.81	56.19	42.6	57.4
	Iklin	47.21	52.79	44.1	55.9
	Lija	47.28	52.72	46.4	53.6
Unit 5	Dingli	48.77	51.23	49.6	50.4
	Mdina	40.0	60.0	48.1	51.9
	Mtarfa	45.12	54.88	43.7	56.3
	Rabat	43.11	56.89	44.4	55.6
Unit 6	Qormi – unspecified	44.71	55.29		
	Qormi – S.Sebastian	46.12	53.88	45	55
	Qormi – S.George	46.33	53.67	46.9	53.1
	Siggiewi	46.54	53.46	45.7	54.3
	Zebbug – Malta	45.93	54.07	45.3	54.7

District 3					
		% of Residents		% of Congregation	
		Male	Female	Male	Female
	<b>Malta Average</b>	<b>45.3</b>	<b>54.7</b>	<b>45.2</b>	<b>54.8</b>
Unit 7	Gharghur	45.76	54.24	45.2	54.8
	Mgarr	47.68	52.32	46.5	53.5
	Mosta	45.96	54.04	44.8	55.2
	Naxxar	45.77	54.23	44.8	55.2
Unit 8	S.Pawl il-Bahar	45.46	54.54	46.1	53.9
	Burmarrad	49.2	50.8	48.1	51.9
	Qawra	45.96	54.04	44.8	55.2
	Mellieha	47.0	53.0	46.5	53.5
	Manikata	43.96	56.04	44.4	55.6

District 4					
		% of Residents		% of Congregation	
		Male	Female	Male	Female
	<b>Malta Average</b>	<b>45.3</b>	<b>54.7</b>	<b>45.2</b>	<b>54.8</b>
Unit 9	Gzira	43.27	56.73	42.6	57.4
	Msidea	43.21	56.79	42.4	57.6
	San Gwann	46.58	53.42	47	53
	Ta' Xbiex	49	51	47.9	52.1
Unit 10	Balluta	40.68	59.32	45.5	54.5
	Sliema - unspecified	48.65	51.35		
	Sliema Stella Maris	41.7	58.3	43.8	56.2
	Sliema San Girgor	43.78	56.22	43.5	56.5
	Sliema Sacro Cuore	41.62	58.38	38.2	61.8
	Sliema Gesu Nazz	38.58	61.42	45.4	54.6
Unit 11	Ibrag	44.95	55.05	43.6	56.4
	Pembroke	48.56	51.44	46.4	53.6
	San Giljan	45.84	54.16	44.9	55.1

District 5					
		% of Residents		% of Congregation	
		Male	Female	Male	Female
	<b>Malta Average</b>	<b>45.3</b>	<b>54.7</b>	<b>45.2</b>	<b>54.8</b>
Unit 12	Luqa	44.16	55.84	44.5	55.5
	Paola - unspecified	49.44	50.56		
	Paola - Christ King	44.76	55.24	47.9	52.1
	Paola - O.L.Lourdes	44.77	55.23	40.8	59.2
	Santa Lucija	47.78	52.22	45.8	54.2
	Tarxien	45.04	54.96	43.3	56.7
Unit 13	Fgura	46.96	53.04	46	54
	Wied il-Ghajj	45.5	54.5	46.2	53.8
	Zabbar	45.47	54.53	43.5	56.5
Unit 14	Bormla	44.39	55.61	46.5	53.5
	Kalkara	45.79	54.21	45.5	54.5
	Senglea	44.07	55.93	44	56
	Vittoriosa	44.75	55.25	46.2	53.8

District 6					
		% of Residents		% of Congregation	
		Male	Female	Male	Female
	<b>Malta Average</b>	<b>45.3</b>	<b>54.7</b>	<b>45.2</b>	<b>54.8</b>
Unit 15	B'Bugia	45.91	54.09	45.4	54.6
	Ghaxaq	44.99	55.01	42.7	57.3
	Gudja	44.88	55.12	47.8	52.2
	M'Xlokk	45.5	54.5	46.5	53.5
	Zejtun	43.08	56.92	43.2	56.8
Unit 16	Kirkop	46.6	53.4	45.3	54.7
	Mqabba	43.57	56.43	40.6	59.4
	Qrendi	43.6	56.4	43.5	56.5
	Safi	45.78	54.22	42.9	57.1
	Zurrieq	45.62	54.38	45.7	54.3

Table 2.2d shows the distribution by sex of attendees in each age group. In the lower age groups the males are better represented at Mass than in higher age groups where more attendees are female.

**Table 2.2d Distribution of Attendees by Age and Sex**

		Age Last Birthday							Total
		0-6	7-14	15-24	25-49	50-64	65-79	80+	
Male	% within Age Last Birthday	54.8%	49.9%	45.9%	45.1%	44.6%	42.4%	41.4%	45.3%
Female	% within Age Last Birthday	45.2%	50.1%	54.1%	54.9%	55.4%	57.6%	58.6%	54.7%

## 2.3 Age

Table 2.3a distributes attendees according to their age groups. Thus very few attendees are below 7 or over 80 years of age.

**Table 2.3a Distribution of Attendees by Age**

Age Last Birthday							Total
0-6	7-14	15-24	25-49	50-64	65-79	80+	
.2%	14.3%	11.6%	31.2%	24.9%	14.7%	3.0%	100.0%

Table 2.3b presents the percentage of attendance of each age group. The number of housebound in each age group was calculated from the 2006 Discern survey which gave an accurate estimate of the size and age distribution of the housebound population of the Maltese islands.

Graph 2.3 highlights the difference in attendance rates across the age groups. Most 7-14 and over 50 year olds attend Mass but 15-24 and 25-49 year olds have much lower attendance rates.

**Table 2.3b Percentage Attendance of Age Groups (Including Missing Values)**

	Age Cohorts							Total
	0-6	7-14	15-24	25-49	50-64	65-79	80+	
Total population	24389	39158	53759	129527	75613	39885	10665	372996
Number Housebound	173	520	1040	2080	2600	4506	5199	16118.25
Weighted population	24216	38638	52719	127447	73013	35379	5466	332662
Mass attendance	375	24105	19687	52601	42341	25211	5073	169394
<b>Percent attendance</b>	<b>1.5</b>	<b>62.4</b>	<b>37.3</b>	<b>41.3</b>	<b>58.0</b>	<b>71.3</b>	<b>92.8</b>	<b>50.9</b>

Including Missing Values

**Graph 2.3 Percent Mass Attendance for Age Groups**

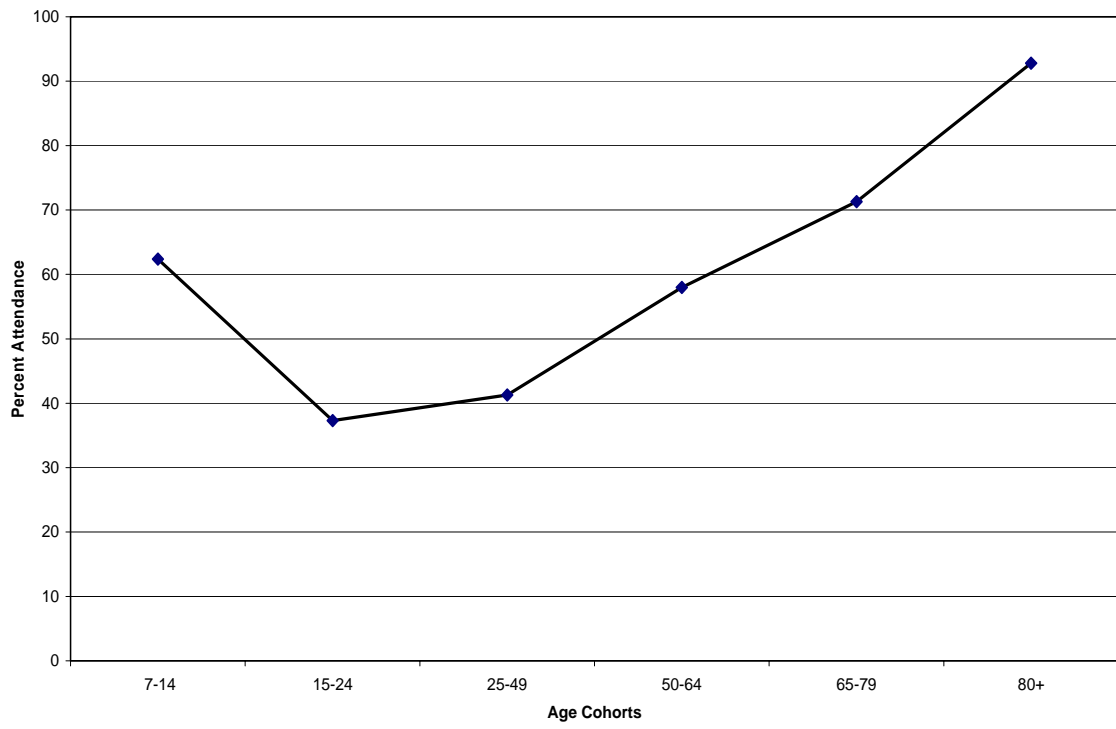


Table 2.3c shows the distribution by age group of residents of all the parishes of Malta. The attendees from District 4 and District 1 are generally older than in other districts such as Districts 6 and 3.

**Table 2.3c Age Distribution of Attendees by Parish of Residence**

District 1								
		Age Last Birthday						
		0-6	7-14	15-24	25-49	50-64	65-79	80+
<b>Malta Average</b>		<b>0.2</b>	<b>13.5</b>	<b>10.9</b>	<b>29.9</b>	<b>25.3</b>	<b>16.8</b>	<b>3.4</b>
Unit 1	Floriana	0	9.4	7.3	20.5	27.6	28.1	7.1
	Valletta (all parishes)							
	Valletta - unspecified	0	16.4	7.3	40	18.2	10.9	7.3
	Valletta San Duminku	0.1	8.1	7.6	19.7	30.2	28	6.3
	Valletta San Pawl	0.3	9.1	7.1	22.5	24.5	30.4	6.1
	Valletta Santu Wistin	0.3	8.7	6.9	21.8	26.2	27.7	8.4
Unit 2	G'Mangia	0.2	10.4	11.7	22.7	31.8	17.9	5.2
	Hamrun (all parishes)							
	Hamrun - unspecified	0.3	11	6.3	21.6	33.9	23.8	3.1
	Hamrun - Imm.Conception	0.1	8.6	10.5	23.8	27.5	25.7	3.8
	Hamrun - S.Cajetan	0	9.9	9.2	21	29.4	24.9	5.5
	Marsa (all parishes)							
	Marsa - unspecified	0	6.7	8.4	21.8	31.6	27.1	4.4
	Marsa - Maria Regina	0	11.7	11.3	25.1	29.7	20.1	2.1
	Marsa - S.S.Trinta'	0.4	9.2	9.5	23.3	30.8	23	3.9
	Santa Venera	0.4	10.9	9.9	28.3	27.4	19.3	3.7
Unit 3	B'Kara (all parishes)							
	B'Kara - unspecified	0.1	12.1	13.3	34.6	24.9	13.1	1.9
	B'Kara - S.Joseph	0.1	12.4	12	28.3	27.8	16.1	3.3
	B'Kara - S.Helen	0.2	12.7	12.9	33.8	24.6	13.5	2.2
	B'Kara - Assumption	0.1	12.9	10.6	35.7	24	12.9	3.7
	Fleur-de-Lys	0.2	10.7	13	25.6	30.4	16.4	3.7



District 2								
		Age Last Birthday						
		0-6	7-14	15-24	25-49	50-64	65-79	80+
<b>Malta Average</b>		<b>0.2</b>	<b>13.5</b>	<b>10.9</b>	<b>29.9</b>	<b>25.3</b>	<b>16.8</b>	<b>3.4</b>
Unit 4	Attard	0.4	16.8	13.3	35.6	22.4	9.7	1.8
	Balzan	0	12.2	10.7	27.6	24	19.3	6.3
	Iklin	0.1	20.5	15.3	37	21.5	4.9	0.7
	Lija	0.3	13.4	13	37.4	22.5	11	2.4
Unit 5	Dingli	0.4	18	13.3	35.6	22	8.8	1.9
	Mdina	0.5	11.7	9.7	21.9	23.5	26.5	6.1
	Mtarfa	0.9	22	7.2	47.9	13.1	5.7	3.4
	Rabat	0.1	11.2	10.7	26	27.2	19	5.8
Unit 6	Qormi (all parishes)							
	Qormi – unspecified	0	10.7	17	35.4	23.8	12.6	0.5
	Qormi – S.Sebastian	0.2	13.6	13.5	29.7	26.4	14.6	1.9
	Qormi – S.George	0.1	13.8	14.4	30.8	25.1	13.6	2.1
	Siggiewi	0.2	16.3	13.5	34	23.4	10.8	1.8
	Zebbug – Malta	0.2	15	12.6	33.9	24.2	12.4	1.8

District 3								
		Age Last Birthday						
		0-6	7-14	15-24	25-49	50-64	65-79	80+
<b>Malta Average</b>		<b>0.2</b>	<b>13.5</b>	<b>10.9</b>	<b>29.9</b>	<b>25.3</b>	<b>16.8</b>	<b>3.4</b>
Unit 7	Gharghur	0.5	15.1	10.5	37.9	24.6	10.7	0.7
	Mgarr	0.3	18.3	14.3	36.8	18.2	9.9	2.2
	Mosta	0.2	16.8	12.3	35.3	21.1	11.3	3
	Naxxar	0.3	17.8	12.5	36.7	20.8	10.3	1.7
Unit 8	SPB, Burmarrad & Qawra							
	S.Pawl il-Bahar	0.1	12.2	9.4	33.9	25.4	16.2	2.8
	Burmarrad	0.3	13.6	11.5	36	22.1	13.9	2.7
	Qawra	0.4	18.6	10.9	37.4	21.6	9.7	1.5
	Mellieha & Manikata							

	Mellieha	0.4	15	10.4	34.4	25.5	12.8	1.5
	Manikata	0.4	15.6	11.3	35.3	21.8	13.5	2.2

District 4								
Age Last Birthday								
		0-6	7-14	15-24	25-49	50-64	65-79	80+
	<b>Malta Average</b>	<b>0.2</b>	<b>13.5</b>	<b>10.9</b>	<b>29.9</b>	<b>25.3</b>	<b>16.8</b>	<b>3.4</b>
Unit 9	Gzira	0.3	10.9	9.3	25	28.2	21.4	4.9
	Msidea	0.1	10.7	9.5	27.4	26.1	19.3	6.9
	San Gwann	0.1	16.3	12.9	31.5	27.5	10	1.7
	Ta' Xbiex	0.2	9.7	10.7	23	35.3	16.9	4.3
Unit 10	Balluta	0.1	10.6	9.4	25.7	24.8	23.5	5.9
	Sliema (all parishes)							
	Sliema - unspecified	0	14.1	6.7	28.2	26.8	16.1	8.1
	Sliema Stella Maris	0.1	7.3	5.6	19.3	28	30.8	8.9
	Sliema San Girgor	0	8.1	7.3	21.4	29.7	24.4	9.1
	Sliema Sacro Cuore	0.4	9.2	6.1	22.3	27.9	26.9	7.2
	Sliema Gesu Nazz	0	6.6	6.4	21.4	23.7	32.9	9
Unit 11	Ibrag	0.4	17.4	11.6	36.8	23.7	8.7	1.4
	Pembroke							
	San Giljan	0.2	11.9	11.3	30.4	26	17.6	2.7

District 5								
Age Last Birthday								
		0-6	7-14	15-24	25-49	50-64	65-79	80+
	<b>Malta Average</b>	<b>0.2</b>	<b>13.5</b>	<b>10.9</b>	<b>29.9</b>	<b>25.3</b>	<b>16.8</b>	<b>3.4</b>
Unit 12	Luqa	0.2	15.9	11.7	30.1	23.1	15	4
	Paola (all parishes)	4140	7894	52.4				
	Paola - unspecified	557						
	Paola - Christ King	2769						
	Paola - O.L.Lourdes	814						
	Santa Lucija	0.1	12.7	12.6	25.4	30.5	17.1	1.5
	Tarxien	0.2	12.8	12.3	30.3	26.7	15.6	2
Unit 13	Fgura	0.3	15.9	13.3	31.7	28.1	9.6	1.1

	Wied il-Ghajn	0.3	18.4	10.4	41.1	19.3	9.3	1.3
	Zabbar	0.3	15.6	12	32.7	26.6	11.1	1.6
Unit 14	Bormla	0.1	11.1	10.7	21	28	24.1	4.9
	Kalkara	0.2	17.1	10.8	33.7	21.6	14.4	2.2
	Senglea	0.5	14.4	11.6	25.7	22.9	20.1	4.9
	Vittoriosa	0.2	10.3	9.6	21.9	28.9	25.5	3.7

District 6								
Age Last Birthday								
		0-6	7-14	15-24	25-49	50-64	65-79	80+
	<b>Malta Average</b>	<b>0.2</b>	<b>13.5</b>	<b>10.9</b>	<b>29.9</b>	<b>25.3</b>	<b>16.8</b>	<b>3.4</b>
Unit 15	B'Bugia	0.2	17.6	11.2	33.4	22.9	12.2	2.4
	Ghaxaq	0.4	16.3	13.7	32.3	25.3	10.3	1.8
	Gudja	0.2	16.8	16.8	30.8	22.4	11.3	1.6
	M'Xlokk	0.1	18	11.8	34.6	23.2	10.8	1.5
	Zejtun	0.1	12.2	12.1	28.8	26.3	16.8	3.7
Unit 16	Kirkop	0.1	21	13.4	36	18.1	10.7	0.7
	Mqabba	0.4	18.4	12.1	34.3	22.5	10.6	1.6
	Qrendi	0.5	15.1	13.9	31.9	24.9	12.1	1.6
	Safi	0.2	17.7	14.8	34.4	22.5	9.5	0.9
	Zurrieq	0.2	14.7	13.2	32.2	25	13.1	1.6

## 2.4 Civil Status

Table 2.4 shows the distribution of attendees according to their civil status. Most attendees are married or single. 1 in 18 attendees are widowed, 1 in 60 attendees are separated while 1 in 1000 attendees are divorced.

**Table 2.4 Civil Status of Attendees**

	Civil Status					Total
	Single	Married	Widowed	Separated	Divorced	
Count	58973	90074	8889	2696	215	160847
% within Mass	36.7%	56.0%	5.5%	1.7%	.1%	100.0%

Missing Values N=8633

## 2.5 Place of Birth

Table 2.5 presents the place of birth of Maltese residents who attended Mass on Census day. 1 in 100 attendees were born in Gozo and 1 in 37 people were born abroad.

**Table 2.5 Attendees' Place of Birth**

	Place of Birth			Total
	Malta	Gozo	Abroad	
Count	158359	1692	4481	164532
% within Mass	96.2%	1.0%	2.7%	100.0%

Missing Values N=4948

## 2.6 Parish of Residence

Table 2.6 gives the percent attendance of parish residents for the parishes of Malta. This is calculated using the Mass attendance figures and the weighted population of each parish, which relies on the 2005 NSO Census of Population and Housing figures. The NSO measures population by local council boundaries whilst the Mass Attendance Census used parish boundaries. This creates problems for those parishes whose territorial limits are not coextensive with those of the local council. Hopefully, by the time we publish the final report we will have the population of people residing in these parishes and percentages will be adjusted accordingly.

For local councils with more than one parish, the percent attendance for each parish could not be given, but a total percentage for the local council was produced (e.g. Valletta, Hamrun, Mellieha & Manikata).

For two parishes (Balluta and Fleur de Lys) there was a further problem as they are part of more than one local council. Therefore not only could these parishes not be given a percent attendance, but the parishes with which they share a local council (San Giljan & Sliema, and Birkirkara & Santa Venera) also could not be given a percent attendance. A combined percentage for the group of parishes is given for these parishes.

District 2 has the highest percentage of attendance whilst District 3 and District 5 have the lowest attendance rates.

**Table 2.6 Percentage Attendance of Parish Residents (Including Missing Values)**

District 1			
		Residents Attending Mass	Percent Attendance
Unit 1	Floriana	1035	51.7
	Valletta (all parishes)	2631	46.7
	Valletta - unspecified	56	
	Valletta San Duminku	952	
	Valletta San Pawl	917	
	Valletta Santu Wistin	706	
Unit 2	G'Mangia	1292	37.6

	Hamrun (all parishes)	4539	53.5
	Hamrun - unspecified	331	
	Hamrun - Imm.Conception	1862	
	Hamrun - S.Cajetan	2346	
	Marsa (all parishes)	2451	51
	Marsa - unspecified	237	
	Marsa - Maria Regina	999	
	Marsa - S.S.Trinta'	1215	
	Santa Venera	2508	
Unit 3	B'Kara, St Venera & Fleur de Lys	13766	55.4
	B'Kara (all parishes)	9851	
	B'Kara - unspecified	768	
	B'Kara - S.Joseph	2319	
	B'Kara - S.Helen	5329	
	B'Kara - Assumption	1435	
	Fleur-de-Lys	1407	

District 2			
		Residents Attending Mass	Percent Attendance
Unit 4	Attard	5159	56.8
	Balzan	2256	65.6
	Iklin	1692	59.3
	Lija	1937	78.2
Unit 5	Dingli	1687	56.9
	Mdina	201	87.5
	Mtarfa	894	41.9
	Rabat	5873	57.5
Unit 6	Qormi (all parishes)	7931	53.7
	Qormi - unspecified	218	
	Qormi - S.Sebastian	3671	
	Qormi - S.George	4042	
	Siggiewi	4080	57.9
	Zebbug - Malta	5468	54.3

District 3			
		Residents Attending Mass	Percent Attendance
Unit 7	Gharghur	1419	66.6
	Mgarr	1914	71.7
	Mosta	9987	60
	Naxxar	5709	53.6
Unit 8	SPB, Burmarrad & Qawra	4395	36.2
	S.Pawl il-Bahar	2282	
	Burmarrad	385	
	Qawra	1728	
	Mellieha & Manikata	3556	52.8
	Mellieha	3276	
	Manikata	280	

District 4			
		Residents Attending Mass	Percent Attendance
Unit 9	Gzira	2608	41.3
	Msida	3061	45
	San Gwann	4854	43.1
	Ta' Xbiex	669	40.7
Unit 10	Sliema, St Julians & Balluta	10136	55.0
	Balluta	1284	
	Sliema (all parishes)	5585	
	Sliema - unspecified	155	
	Sliema Stella Maris	1699	
	Sliema San Girgor	1498	
	Sliema Sacro Cuore	1633	
	Sliema Gesu Nazz	600	
Unit 11	Ibrag	2921	40.5
	Pembroke	1318	50.7
	San Giljan	3267	



District 5			
		Residents Attending Mass	Percent Attendance
Unit 12	Luqa	2066	38.5
	Paola (all parishes)	4140	52.4
	Paola – unspecified	557	
	Paola – Christ King	2769	
	Paola – O.L.Lourdes	814	
	Santa Lucija	1516	53.6
	Tarxien	3741	55.2
Unit 13	Fgura	4689	46.7
	Wied il-Ghajj	3336	40.3
	Zabbar	6901	52.7
Unit 14	Bormla	1966	39.1
	Kalkara	1297	50.7
	Senglea	1003	36.5
	Vittoriosa	1085	45.2

District 6			
		Residents Attending Mass	Percent Attendance
Unit 15	B'Bugia	3351	43.4
	Ghaxaq	1993	51
	Gudja	1559	60.3
	M'Xlokk	1481	51.8
	Zejtun	5114	50.2
Unit 16	Kirkop	881	45.3
	Mqabba	1388	51.5
	Qrendi	1188	52.8
	Safi	849	48.9
	Zurrieq	4480	51.2

Including Missing Values

## 2.7 Occupation

Table 2.7 shows the distribution of attendees according to their occupation. Most attendees are employees, house carers, students or pensioners.

**Table 2.7 Distribution of Attendees by Occupation**

	Count	% within Mass
Employed	46247	28.3
Self-employed	7312	4.5
Employer	3159	1.9
House or Family carer	37511	23.0
Unemployed	2705	1.7
Pensioner	32778	20.1
Still at School/University	33554	20.6
Total	163266	100

Missing Values N=6214

## 2.8 Prior Attendance

Table 2.8 shows the number and percent of attendees who did or did not attend Mass on the Sunday previous to the Census Sunday. 1 in 10 attendees had not attended Mass on the previous Sunday.

**Table 2.8 Attendees at Mass on Sunday prior to Census Sunday**

	Attend Mass Last Sunday		Total
	Yes	No	
Count	149125	15798	164923
% within Mass	90.4%	9.6%	100.0%

Missing Values N=4557

## 2.9 Membership of Catholic Organisation

Table 2.9 asks how many attendees are members of a catholic organisation. More than 1 in 5 attendees are members of a Catholic organisation.

**Table 2.9 Mass Attendance and Active Member of Religious Organisations**

	Active Member of Religious Organisations		Total
	Yes	No	
Count	35401	125787	161188
% within Mass	22.0%	78.0%	100.0%

Missing Values N=8292

## 3. Diocese of Gozo

## 3. Diocese of Gozo

### 3.1 Day, Time and Place

Table 3.1a shows that 1 in 5 of Mass attendees (21.4%) went to the Saturday evening Mass, the remaining 78.6% went on Sunday. Among the attendees, 2940 (13%) participated in two or more Masses on the census weekend. Of those who went to Mass on Saturday 3.9% went for a second Mass; whilst 15.5% of those who attended Mass on Sunday had already attended a Mass of Obligation (which includes the possibility of going to Mass on both Saturday evening and another one on Sunday).

**Table 3.1a Day and Number of Attendances**

		Saturday Eve/Sunday		Total
		Saturday	Sunday	
<b>First Mass</b>	Count	4642	14983	<b>19625</b>
	% within First or More Masses	23.7%	76.3%	<b>100.0%</b>
	% within Saturday Eve/Sunday	96.1%	84.5%	<b>87.0%</b>
<b>More Masses</b>	Count	189	2751	<b>2940</b>
	% within First or More Masses	6.4%	93.6%	<b>100.0%</b>
	% within Saturday Eve/Sunday	3.9%	15.5%	<b>13.0%</b>
<b>Total</b>	Count	4831	17734	<b>22565</b>
% within First or More Masses		21.4%	78.6%	<b>100.0%</b>
% within Saturday Eve/Sunday		100.0%	100.0%	<b>100.0%</b>

Missing Values N=567

Table 3.1b lists the ten most popular Mass times for Maltese attendees. 1800 Saturday evening Mass is the most popular time. On Sunday the 10am, 8.30 am and 8am are the most popular times.

**Table 3.1b Ten Most Popular Time Schedules**

	<b>Time</b>	<b>Attendance</b>
1	<i>18.00 Saturday</i>	<i>1964</i>
2	10.00 Sunday	1829
3	8.30 Sunday	1397
4	8.00 Sunday	1251
5	11.00 Sunday	1157
6	7.00 Sunday	1144
7	<i>17.30 Saturday</i>	<i>997</i>
8	6.00 Sunday	885
9	10.30 Sunday	835
10	6.30 Sunday	753

Table 3.1c records the first Mass attendance at every place of worship in Gozo on the Census day.

**Table 3.1c. Attendance at Places of Worship in Gozo**

<b>Type of Church</b>	<b>N</b>
Fontana	479
Ghajnsielem	912
Ghajnsielem – Kappella ta' Lourdes	189
Ghajnsielem – Knisja Sant Antnin	470
Gharb	505
Gharb – Madonna ta' Pinu	1175
Gharb – Madonna taz-Zejt	71
Ghasri	220
Kemmuna	6
Kercem	830
Kercem – Santa Lucija	54
Kercem, Xlendi – Madonna tal-Karmnu	34
Munxar	405
Nadur	2101
Nadur – Cimiterju	85

Qala	821
Qala – Kappella tas-Sorijiet	17
Qala – Kuncizzjoni	120
San Lawrenz	315
San Lawrenz – Kappella Sant Anna	38
Sannat	916
Victoria San Gorg – Centru Parrokkjali	20
Victoria – Centru ta' Kana	316
Victoria – Dar Manresa	167
Victoria – Il-Katidral – Neo Katekumeni	23
Victoria – Kappella Cimiterju	116
Victoria – Kappella Sptar Generali	197
Victoria – Kattidral	1074
Victoria – Knisja Kapuccini	241
Victoria – Knisja Raghaj it-Tajjeb	359
Victoria – Knisja San Frangisk	353
Victoria – Knisja Santu Wistin	129
Victoria – Knisja ta' Savina	130
Victoria – Knisja tan-Nunzjata	24
Victoria – Oratorju Don Bosco	226
Victoria – San Gorg	2335
Victoria – Santa Marta	68
Victoria – Santwarju Madonna ta' Pompei	107
Victoria – Seminarju Qalb ta' Gesu	40
Victoria – Sorijiet Frangiskani	83
Victoria – Sorijiet Karmelitani	202
Victoria – Sorijiet Salezjani	30
Victoria – Sptar tal-Ibrag – Anzjani Irgiel	23
Victoria – Triomfi House	10
Xaghra	1637



Xaghra – Knisja Nazzarenu	278
Xaghra – San Anton Abbati	109
Xaghra, M'forn – Knisja San Pawl	635
Xewkija	1239
Xewkija – Madonna tal-Hniena	53
Xewkija – Muzew Subien	63
Zebbug – Gozo	533
Zebbug, Gozo- Stella Maris, MSSP	27
Zebbug, M'Forn – St Anthony of Padova	62
Zebbug-Gozo: Cemetery Ch	111

Missing values N=302

Table 3.1d highlights the ten most popular places of worship in Gozo.

**Table 3.1d. Ten Most Popular Places of Worship**

	<b>Place of Worship</b>	<b>Attendees</b>
1	Victoria – San Gorg	2335
2	Nadur	2101
3	Xaghra	1637
4	Xewkija	1239
5	Gharb – Madonna ta' Pinu	1175
6	Victoria – Kattidral	1074
7	Sannat	916
8	Ghajnsielem	912
9	Kercem	830
10	Qala	821

## 3.2 Sex

Table 3.2a gives the absolute and percent distribution of Gozitan attendees by sex. Males form 46.6% of the Gozitan attendees and females form 53.4% of attendees.

**3.2a Distribution of Attendees by Sex**

Sex	Male	N	9045
			46.6%
	Female	N	10360
			53.4%
Total		N	19405
			100.0%

Missing Values N=712

Table 3.2b presents the percent attendance of both sexes. 68.7% of men went to Mass whilst a higher percentage of women, 76.9%, went to Mass on Census day. These figures were calculated by firstly adding the missing values onto the attendees in Table 3.2a in order to give a true number of attendees. The total male (15349) and female (15704) populations of Malta (NSO, 2005) were used to find the weighted populations (13681.9/13998.4), and thus the percentage attendance of both sexes was calculated.

**Table 3.2b Percentage Attendance of Male/Female Weighted Population**

	Percent attendance
Male	68.7
Female	76.9

Table 3.2c gives the distribution of attendees according to sex for all the parishes of Gozo. There are two measures given in the table. The first two columns show the distribution by sex for the *parish of residence* of the attendees. The last two columns show the distribution by sex for the *parish of congregation*

In Munxar 55.2% of resident attendees are female whilst in San Lawrenz only 50.9% of resident attendees are female.

The congregation with most females is Fontana with 59% whilst Victoria Kattidral has only 46.8% female congregation.

**Table 3.2c Attendees by Parish of Residence/Congregation and Sex**

	% of attendees resident in parish		% of all attendees in parish	
	Male	Female	Male	Female
<b>Gozo Average</b>	<b>47.15</b>	<b>52.85</b>	<b>46.5</b>	<b>53.5</b>
Fontana	47.10%	52.90%	41.00%	59.00%
Ghajnsielem	45.90%	54.10%	46.10%	53.90%
Gharb	47.90%	52.10%	47.00%	53.00%
Ghasri	46.40%	53.60%	48.40%	51.60%
Kercem	48.60%	51.40%	47.50%	52.50%
Munxar	44.80%	55.20%	42.90%	57.10%
Nadur	46.90%	53.10%	47.80%	52.20%
Qala	46.30%	53.70%	44.20%	55.80%
San Lawrenz	49.10%	50.90%	46.20%	53.80%
Sannat	46.20%	53.80%	45.40%	54.60%
Victoria – Kattidral	46.50%	53.50%	53.60%	46.40%
Victoria – San Gorg	46.10%	53.90%	52.20%	47.80%
Victoria – unspecified	52.90%	47.10%	44.00%	56.00%
Xaghra	46.30%	53.70%	44.80%	55.20%
Xewkija	45.00%	55.00%	44.60%	55.40%
Zebbug – Gozo	48.70%	51.30%	47.70%	52.30%

Table 3.2d shows the distribution by sex of attendees in age group. In the lower age groups the males are better represented at Mass than in higher age groups where more attendees are female.

**Table 3.2d Distribution of Attendees by Age and Sex**

	<b>Age Last Birthday</b>							<b>Total</b>
	0-6	7-14	15-24	25-49	50-64	65-79	80+	
Male	50.0%	51.8%	46.7%	47.1%	45.6%	42.9%	41.3%	46.6%
Female	50.0%	48.2%	53.3%	52.9%	54.4%	57.1%	58.7%	53.4%

### 3.3 Age

Table 3.3a distributes attendees according to their age groups.

**3.3a Distribution of Attendees by Age**

Age Last Birthday							
0-6	7-14	15-24	25-49	50-64	65-79	80+	Total
.0%	12.7%	14.8%	34.7%	22.1%	13.0%	2.7%	100.0%

Table 3.3b presents the percentage of attendance of each age group. The number of housebound in each age group was calculated from the 2006 Discern survey which gave an accurate estimate of the size and age distribution of the housebound population of the Maltese islands.

**Table 3.3b Percentage Attendance of Age Groups (Including Missing Values)**

	Age Cohorts							
	0-6	7-14	15-24	25-49	50-64	65-79	80+	Total
Total population	2032	3384	4481	10003	6212	3713	1228	31053
Number Housebound	14.44	43.3	86.6	173.3	216.6	375.4	433.2	1342.75
Weighted population	2017.56	3340.7	4394.4	9829.7	5995.4	3337.6	794.9	
Mass attendance	10	2618	3013	7305	4668	2695	556	20937
<b>Percent attendance</b>	<b>0.5</b>	<b>78.4</b>	<b>68.6</b>	<b>74.3</b>	<b>77.9</b>	<b>80.7</b>	<b>69.9</b>	

Including Missing Values

Graph 3.3 highlights the difference in attendance rates across the age groups. Most 7–14 and over 50 year olds attend Mass but 15–24 and 25–49 year olds have much lower attendance rates.

**Graph 3.3 Percent Mass Attendance for Age Groups**

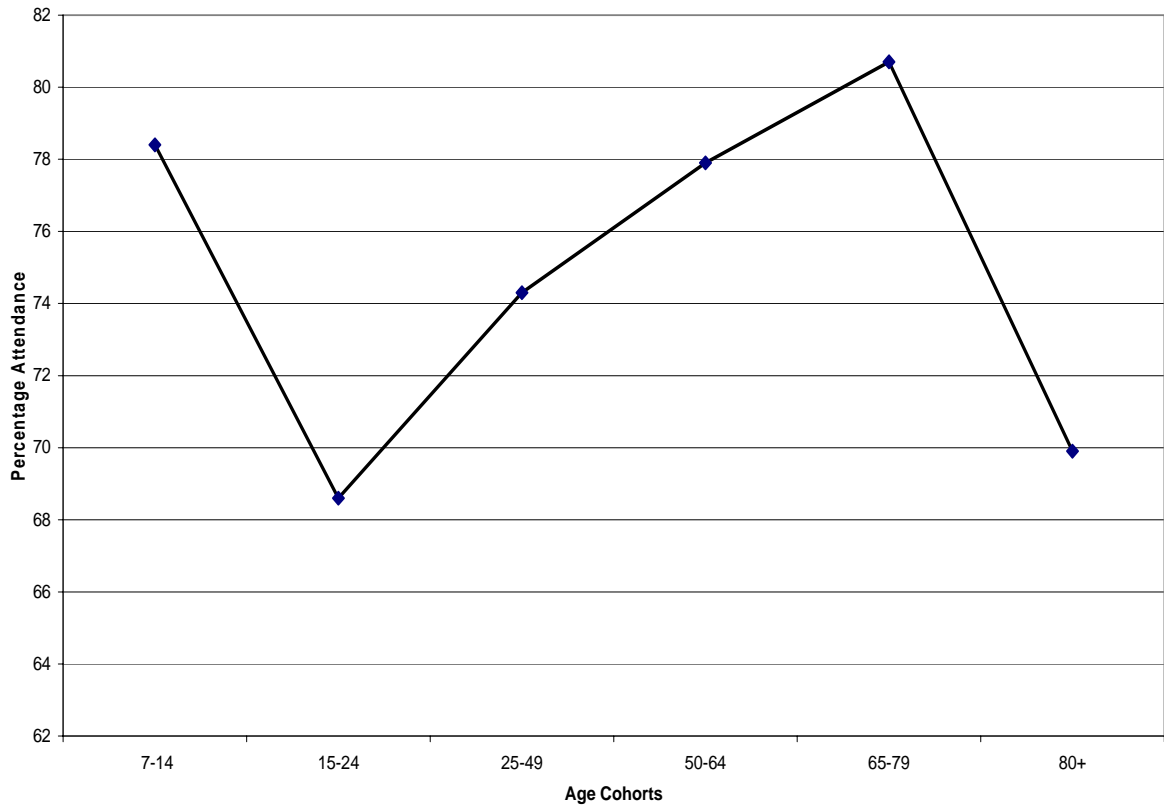


Table 3.3c shows the distribution by age group of residents of all the parishes of Gozo.

**Table 3.3c Age Distribution of Attendees by Parish of Residence**

	Age Last Birthday							Total
	0-6	7-14	15-24	25-49	50-64	65-79	80+	
<b>Gozo Average</b>	<b>0.0</b>	<b>12.6</b>	<b>14.2</b>	<b>35.2</b>	<b>21.4</b>	<b>13.2</b>	<b>3.3</b>	<b>100.0</b>
Fontana	0.0	13.1	12.1	35.0	21.4	15.2	3.1	100
Ghajnsielem	0.0	12.8	14.4	35.2	23.8	12.0	1.9	100
Gharb	0.0	13.5	14.9	34.1	19.0	15.3	3.3	100
Ghasri	0.0	10.9	10.9	37.7	20.1	14.6	5.9	100
Kercem	0.0	12.5	16.0	36.7	19.3	12.7	2.8	100
Munxar	0.2	16.2	14.1	45.1	15.7	7.8	0.9	100
Nadur	0.0	12.5	15.7	33.3	23.5	12.6	2.4	100
Qala	0.0	13.7	13.6	32.7	22.0	14.6	3.3	100
San Lawrenz	0.0	13.0	14.3	35.9	20.5	13.9	2.5	100
Sannat	0.1	14.3	14.4	37.0	19.6	12.7	1.8	100
Victoria – Kattidral	0.0	12.4	13.5	32.8	24.7	14.1	2.5	100
Victoria – San Gorg	0.0	11.2	15.6	31.6	23.2	14.7	3.7	100
Victoria – unspecified	0.0	7.2	14.3	28.7	23.4	15.1	11.3	100
Xaghra	0.0	12.7	15.7	34.4	23.0	11.6	2.6	100
Xewkija	0.2	13.7	15.2	36.4	20.6	11.9	2.0	100
Zebbug – Gozo	0.0	11.3	13.1	37.3	23.2	12.8	2.4	100

### 3.4 Civil Status

Table 3.4 shows the distribution of attendees according to their civil status. Most attendees are married or single. 1 in 22 attendees are widowed, 1 in 125 attendees are separated while 1 in 500 of attendees are divorced..

#### 3.4. Civil Status of Attendees

	Civil Status					Total
	Single	Married	Widowed	Separated	Divorced	
N	7852	10480	880	158	34	19404
	40.5%	54.0%	4.5%	.8%	.2%	100.0%

Missing values N=713



### 3.5 Place of Birth

Table 3.5 presents the place of birth of Gozitan residents who attended Mass on Census Sunday. 1 in 17 attendees were born in Malta and 1 in 13 people were born abroad.

#### 3.5 Attendees' Place of Birth

	Place of Birth			Total
	Malta	Gozo	Foreign	
N	1134	16848	1485	19467
% within Mass	5.8%	86.5%	7.6%	100.0%

Missing values N=650

### 3.6 Parish of Residence

Table 3.6 gives the percent attendance of parish residents for the parishes of Gozo. This is calculated using the Mass attendance figures and the weighted population of each parish, which relies on the 2005 NSO Census of Population and Housing figures. The NSO measures population by local council boundaries whilst the Mass Attendance Census used parish boundaries. This creates problems for those parishes whose territorial limits are not coextensive with those of the local council. Hopefully, by the time we publish the final report we will have the population of people residing in these parishes and percentages will be adjusted accordingly.

For local councils with more than one parish, the percent attendance for each parish could not be given, but a total percentage for the local council was produced (e.g. Victoria).

Kercem has the highest percentage of attendance (86.1%) whilst the Zebbug (51.5%) has the lowest attendance rates.

**3.6 Percentage Attendance of Parish Residents (Including Missing Values)**

	<b>Residents Attending Mass</b>	<b>Percentage of Residents Attending Mass</b>
Fontana	627	83.1
Ghajnsielem	1667	72.5
Gharb	777	75.1
Ghasri	246	66.2
Kercem	1269	86.1
Munxar	577	63.5
Nadur	2465	66.1
Qala	1039	72.4
San Lawrenz	452	84.7
Sannat	1084	70.3
Victoria (all parishes)	4404	77.0
Victoria – Kattidral	1756	
Victoria – San Gorg	2377	
Victoria – unspecified	271	
Xaghra	2619	74.2
Xewkija	2079	74.9
Zebbug – Gozo	812	51.5

Including Missing values

### 3.7 Occupation

Table 3.7 shows the distribution of attendees according to their occupation. Most attendees are employees, house carers, students or pensioners.

**3.7 Distribution of Attendees by Occupation**

	N	% within Mass
Employed	5573	28.8
Self-employed	1153	6.0
Employer	458	2.4
House or Family carer	3901	20.1
Unemployed	554	2.9
Pensioner	3803	19.6
Still at School/University	3922	20.3
Total	19364	100.0

Missing values N=753

### 3.8 Prior Attendance

Table 3.8 shows the number and percent of attendees who did or did not attend Mass on the Sunday previous to the Census Sunday. 1 in 15 attendees had not attended Mass on the previous Sunday.

**3.8 Attendees at Mass on Sunday prior to Census Sunday**

	Attend Mass Last Sunday		
	Yes	No	Total
N	18211	1262	19473
% within Mass	93.5%	6.5%	100.0%

Missing values N=644

### 3.9 Membership of Catholic Organisation

Table 3.9 asks how many attendees are members of a catholic organisation. More than 1 in 4 attendees are members of a Catholic organisation.

**3.9 Mass Attendance and Active Member of Religious Organisations**

	Active Member of Rel.Org.		Total
	Yes	No	
N	5218	14808	20026
Percentage	26.1%	73.9%	100.0%

Missing values N=91

# Significant Findings

---

## General Results

The percent Sunday Mass attendance has fallen by almost 11% between 1995 and 2005 in the Maltese islands. The rate of change is slightly higher than in the previous decades. In 2005 the percent Sunday Mass attendance was 51.0% in Malta, 72.7% in Gozo and 52.6% for Malta & Gozo together.

## Day, Time and Place

Over a quarter attend Mass on Saturday evening in both Malta and Gozo.

## Sex

There are more females than males amongst Maltese and Gozitan attendees. A greater proportion of the female population than the male attend Mass for both Malta and Gozo.

## Age

In Malta the age groups with the lowest attendance rates are the 15–24 (37.3%) and the 25–49 (41.3%) year olds. These attendance rates are much lower than for those aged 7–14 and for those over the age of 50. Gozo shows a similar trend with a drop in attendance amongst 15–24 and 25–49 year olds.

## Civil Status

Married people are the largest group of Mass attendees in both Malta and Gozo. There is a higher percentage of separated attendees in Malta than in Gozo, but the percentage of divorcees attending Mass in Gozo is higher than in Malta.

## Place of Birth

Many Maltese and especially Gozitan attendees were born outside of the Maltese Islands.

## **Parish of Residence**

Provisional results indicate that the percent attendance for Maltese parishes ranges from 36.2% to 87.5%. In Gozo the range is 51.5% to 86.1%.

## **Occupation**

It is indicative that one fifth (Malta: 20.1%; Gozo: 19.6%) of the attendees in Malta and Gozo are pensioners. Another one fifth (Malta: 20.6%; Gozo: 20.3%) are students (school or university).

Wage earners (employed, self-employed and employers) make up 34.7% of Maltese and 37.2% Gozitan attendees.

According to figures published by NSO in July 2005 (cf NSO Press Release) the unemployment rate stood at 4.9% of the Labour supply. One can assume a comparison between the figures of unemployed who attended Mass in Malta and Gozo which stood at 1.7% and 2.9% respectively. Further analysis of these figures will be supplied in the final report of this Census.

## **Regular Attendance**

One in ten Maltese attendees and one in fifteen Gozitan attendees did not attend Mass on the Sunday prior to Census Sunday.

## **Membership of Catholic Organisations**

One in five Maltese (22%) and one in four (26.1%) Gozitan attendees are members of a Catholic organisation.